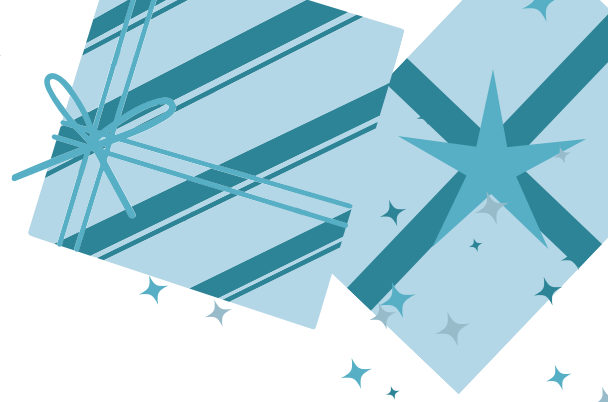


# Holiday

## Assistance Resource



### Council of Churches of the Ozarks **Holiday Assistance Programs**

#### Thanksgiving Turkey

Crosslines provides families with school-aged or younger children a turkey for Thanksgiving dinner.

*Families with school-aged or younger children can apply in person during the following times:*

*Monday, Sept. 30 – Saturday, Oct. 5, 9 am – 1:45 pm*

*Wednesday, Oct. 2, 5:30 – 7 pm*

*Monday, Oct. 7 – Friday, Oct. 11, 9 am – 1:45 pm*

*Wednesday, Oct. 9, 5:30 – 7 pm*

*Monday, Oct. 28 – Saturday, Nov. 2, 9 am – 1:45 pm*

*Wednesday, Oct. 30, 5:30 – 7 pm*

#### Christmas Turkey

Crosslines provides a turkey to families with school-aged or younger children.

*Families with school-aged or younger children can apply in person during the following times:*

*Monday, Sept. 30 – Saturday, Oct. 5, 9 am – 1:45 pm*

*Wednesday, Oct. 2, 5:30 – 7 pm*

*Monday, Oct. 7 – Friday, Oct. 11, 9 am – 1:45 pm*

*Wednesday, Oct. 9, 5:30 – 7 pm*

*Monday, Oct. 28 – Saturday, Nov. 2, 9 am – 1:45 pm*

*Wednesday, Oct. 30, 5:30 – 7 pm*

#### Christmas Toy Store

The Toystore provides brand-new toys for school-aged or younger children. Parents shop at the Toystore and pick out up to five items for their child which may include a large toy, a medium toy, a small toy, a book, and a knit item.

*Families with school-aged or younger children can apply in person during the following times:*

*Monday, Sept. 30 – Saturday, Oct. 5, 9 am – 1:45 pm*

*Wednesday, Oct. 2, 5:30 – 7 pm*

*Monday, Oct. 7 – Friday, Oct. 11, 9 am – 1:45 pm*

*Wednesday, Oct. 9, 5:30 – 7 pm*

*Monday, Oct. 28 – Saturday, Nov. 2, 9 am – 1:45 pm*

*Wednesday, Oct. 30, 5:30 – 7 pm*

#### **TO QUALIFY FOR HOLIDAY ASSISTANCE PROGRAMS THROUGH CROSSLINES, APPLICANTS MUST MEET THE FOLLOWING REQUIREMENTS:**

- MUST BE RESIDENTS OF GREENE COUNTY
- MUST PROVIDE SOCIAL SECURITY CARDS FOR ALL MEMBERS OF HOUSEHOLD (INCLUDING CHILDREN)
- MUST PROVIDE A PIECE OF MAIL LESS THAN 30 DAYS OLD
- HOUSEHOLD INCOME MUST FALL AT OR BELOW USDA POVERTY SCALE FOR FAMILY SIZE
- HAVE A SCHOOL-AGED OR YOUNGER CHILD (BIRTH TO 18 YEARS) LIVING IN THE HOUSEHOLD



#### **CONTACT**

3055 E. Division  
Springfield, MO 65802  
Phone: 417-862-3586  
<https://cchozarks.org/holiday/find-support/>

